

# HSU 31 built-in cabinet paper towel dispenser

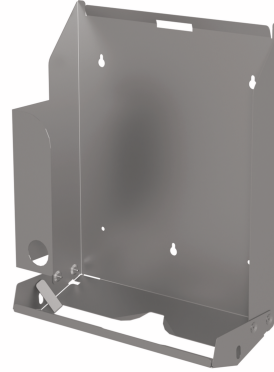
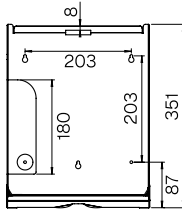
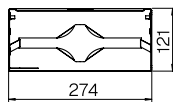
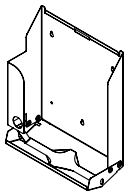
High-quality folding paper towel dispenser made of stainless steel for cabinet installation

Art. No. 1424527

 **OPHARDT**  
HYGIENE

**OPHARDT HYGIENE-TECHNIK GmbH**  
Lindenau 27 | 47661 Issum | Germany  
Tel.: +49 (0) 28 35 18-10 | Fax +49 (0) 28 35 18-77  
planer@ophardt.com | www.ophardt.com

## HSU 31 Schrankeinbau / Built-in cabinet



Maße in mm - Dimensions in mm



## References

airports, train stations, schools, kindergardens, hotels, restaurants, commercial kitchen, food processing areas, prisons, exhibitions, conference centres, shopping centres, fitness and sports centres, industry, laboratories, administration facilities

## Usage examples

washrooms, toilets, baths, kitchens

## Technical data

Back plate:	Stainless steel
Filling volume (sheet):	approx. 500-600 sheets
Paper type:	C-fold, Layerfold, Z-Fold, ZZ-Fold, V-Fold, Zick-Zack, Multi- and Interfold
with/without viewing window:	Clear
Lock:	SanTRAL vandalism-proof lock, plastic
Mounting:	Wall mounting with 4 screws and wall plugs, for behind-the-mirror mounting
Cleaning:	manual wipe disinfection, not dishwashersafe, not autoclavable
Warranty:	5 years
Dimensions (W x H x D) in mm:	273,5x350,5x120
Note:	Before using new products, please always check the compatibility of the product and the dispensing system to ensure proper functionality.