

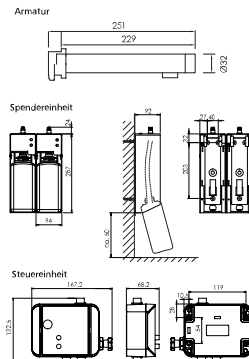
# Untouchable MWSD Straight

High-quality touchless faucet system for wall mounting for water, soap and disinfectant  
Art.-No. 5400008

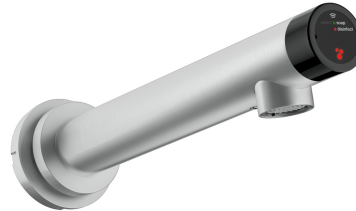


**OPHARDT HYGIENE-TECHNIK GmbH**  
Lindenau 27 | 47611 Issum | Germany  
Tel.: +49 (0) 28 35 18-10 | Fax +49 (0) 28 35 18-77  
planer@ophardt.com | www.ophardt.com

## the untouchable gerade



Maße in mm - Dimensions in mm



## References

retirement/care homes, dental practices, commercial kitchen, clinics, laboratories, food processing areas, rehabilitation facilities

## Usage examples

washrooms, therapy rooms, nursing and examination rooms, kitchens

## Technical data

Housing:	Stainless steel 1.4404 (AISI 316L), brushed
Filling volume (ml):	1000 ml
Dosage quantity:	Water: depending on line pressure 100-250 ml/second, Liquid soap: 1.5 ml/stroke, Disinfectant: 1.0 ml/stroke
Filling good:	Water, Liquid soaps, Disinfectant
Number of faucets:	1 multifunctional touchless faucet
Control unit:	Plastic, wall mounting with 4 screws and wall plugs
Dispenser unit:	Aluminium, matte silver anodized, wall mounting with 3 screws and wall plugs
Operating pressure:	0.3 - 7 bar (operation only with mains pressure, not with low pressure)
Flow rate:	ca. 7-20 liter/minute
Water temperature:	max. 70 °C
Duration continuous water operation:	2 minutes (switches off automatically to prevent overflow)
Duration Hygienic flushing:	30 seconds, every 24 hours after the last water withdrawal
Power supply:	230V AC to 12V DC/1A power supply unit
Angle valve connection:	G 3/8"
Flow regulator:	Neoperl self cleaning
Power consumption:	Standby mode: 0.2 Watt; Water mode: 7.2 Watt
Compliance:	EN60335-1, EN13959, EMV, RoHS, TrinkwV2001, DIN EN 55014, DIN EN 61000, DVGW
Mounting:	Wall mounting with 3 screws and wall plugs
Cleaning:	manual wipe disinfection, not dishwashersafe, not autoclavable
Dimensions (W x H x D) in mm:	32x251x32
Hinweis:	Before using new products, please always check the compatibility of the product and the dispensing system to ensure proper functionality.